



GARDEN & ASSOC.

P.O. Box 451, Oskaloosa, Iowa 52577-0451 Phone: (641)672-2526

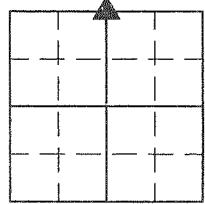
KAREN SCHWANEBECK, RECORDER  
MARION COUNTY IOWA

UNITED STATES PUBLIC LAND SURVEY CORNER CERTIFICATE

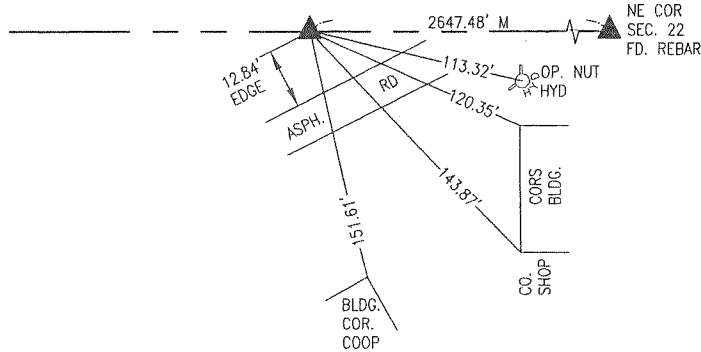
OF

Land Survey Monuments situated in Section 22, Township 77, Range 19, of the Fifth Principal Meridian, MARION County, Iowa. Previously recorded in N/A in County Recorder's Office.

Monument Description and Remarks: SEE BELOW



N. 1/4



FD. 1" PIPE ABOVE CONC. MONUMENT

PL \$700 ck - Ret Garden & Assoc enr

I hereby certify that this land surveying document was prepared and the related survey work was performed by me or under my direct personal supervision and that I am a duly licensed Professional Land Surveyor under the laws of the State of Iowa.

Gary Wayne Keith 13 April 2015  
Gary Wayne Keith, P.L.S. Date

License number: 11420

My license renewal date is December 31, 2016

SEAL



List Corners to be Indexed			
Corners	Section	Township	Range
N 1/4	22	77	19

Found sandstone 23"x13"x8" over  
2-2" tile

Set c.m. on one tile lowered in  
Place. Placed stone on top c.m.

c.m. 21" Below surface

N $\frac{1}{2}$  Cor 22-77-19

Set - 10-17-40

Notes = Kennedy

Party - Shore & Mitchell

