

Prepared by: Abie C. Davis, P.E. & L.S., 1428 Oregon St., Knoxville, Iowa 50138 Phone: (515) 842-5863

## UNITED STATES PUBLIC LAND SURVEY CORNER CERTIFICATE

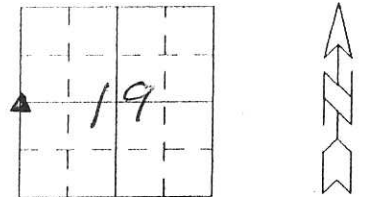
SLS19-94

Land survey Monuments situated in Section 19, Township 77N, Range 18W, of the Fifth Principal Meridian, Marion County, Iowa.

Previously recorded in N/A in County Recorders Office.

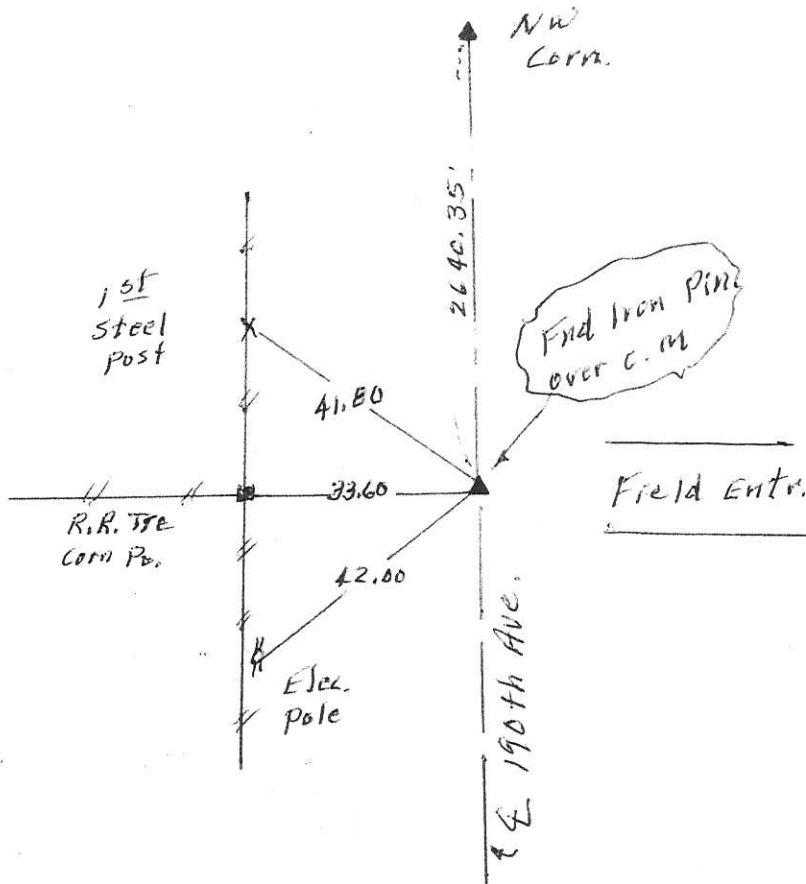
Show reason for preparing this certificate, the evidence and detailed procedures used in establishing the corner positions and monumentation found or placed

Monument Description and Remarks: \_\_\_\_\_



### PLAN - VIEW

(Show a minimum of three reference ties to durable physical objects, relevant monuments and physical conditions that will enable recovery of the corner.)



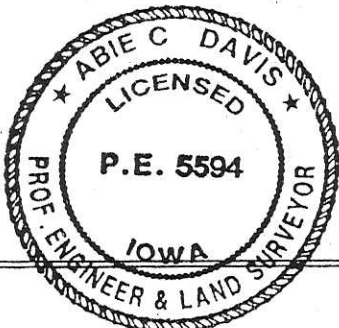
I hereby certify that the survey work was completed and this land surveying document was prepared by me or under my direct personal supervision and that I am a duly licensed land surveyor under the laws of the state of Iowa

Signature: Abie C. Davis  
Abie C. Davis, P.E. & L.S.

Date: 9/8/16 Reg. No. 5594

My license renewal date is December 31, 2017

SEAL



List Corners to be Indexed			
Corners	Section	Twp	Range
<u>W4</u>	<u>19</u>	<u>77N</u>	<u>18W</u>

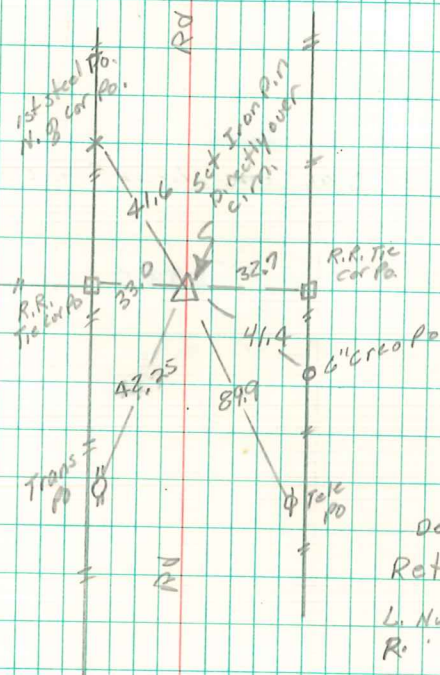
Found Sandstone 12"x8"x3" &  
1-Brick & lime Rock broken in  
Pieces over 2-2 1/2" tile

Set c.m. over 2 1/2" tile Put Rocks  
on North side c.m.

E 1/4 cor 24-77-19

set-11-8-39

Notes - Kennedy  
Party =



24 19

Dec 12-1980  
Retied By  
L. Nugteren  
R. " "