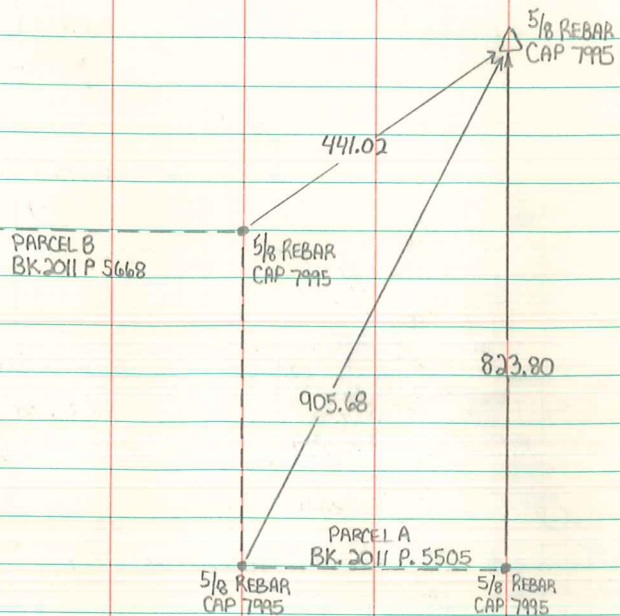


NE COR SW 1/4 NW 1/4 SECTION 25-77-19



SET  $5/8$ " x 18" ORANGE PLASTIC CAPPED REBAR, # 7995, AT MATHEMATICAL CENTER OF  $1/4$  SECTION USING FOUND OR ESTABLISHED  $1/4$  SECTION CORNERS.

ALSO SEE PLAT OF SURVEY RECORDED IN BOOK 2011 PAGE 5668

THIS CORNER IS IN A CULTIVATED FIELD WITH NO PHYSICAL OBJECTS WITHIN A REASONABLE DISTANCE TO TIE CORNER TO.

12/31/11

BRIAN MORRISSEY