

Reestablished Cor on Direct Line
 between Stones c.m. at S.E. & N.E. cor
 North & South of Section

Set c.m. over 1-2" round tile

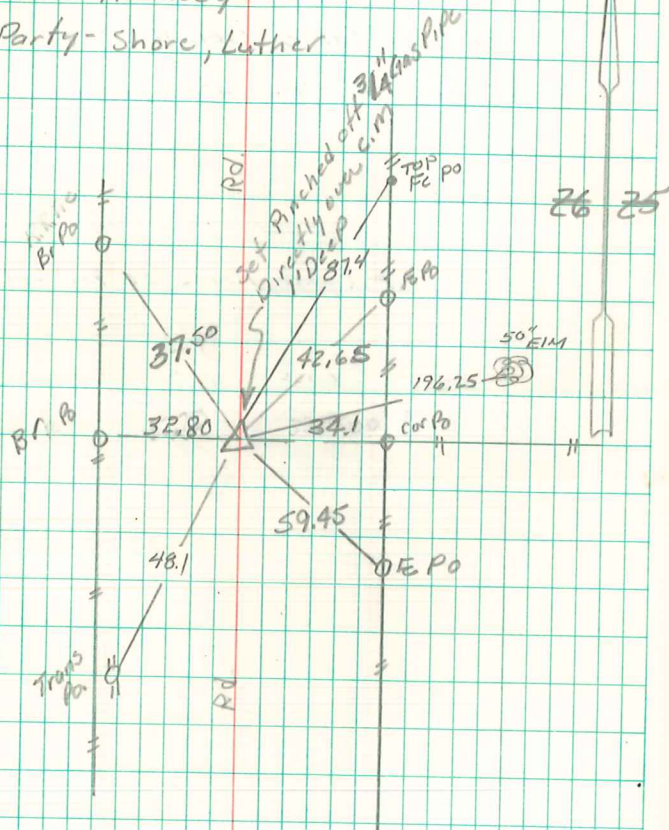
c.m. 10" Under Surface

E $\frac{1}{4}$ cor. 26-77-19

Set - 7-5-41

Notes - Kennedy

Party - Shore, Luther



FD. CONC. MONT. 33" DEEP
 SET 5/8 I.P. W/ALUM. KAP 6923
 10/6/92 D. MEINEN