



Document 17-5133

Book 2017 Page 5133 Type CORNR Pages 1
Date 11/21/2017 Time 12:20 PM
Rec Amt \$7.00

KAREN SCHWANEBECK, RECORDER
MARION COUNTY IOWA

Prepared by Abie C. Davis, P.E. & L.S., 1428 Oregon St., Knoxville, IA 50138 (641) 842-5863

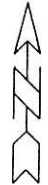
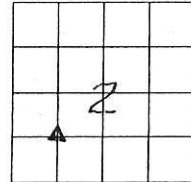
UNITED STATES PUBLIC LAND SURVEY CORNER CERTIFICATE OF

Land survey Monuments situated in Section 2, Township 77 N, Range 19 W of the Fifth Principal Meridian, MARION County, Iowa.

Previously recorded in N/A in County Recorders Office.

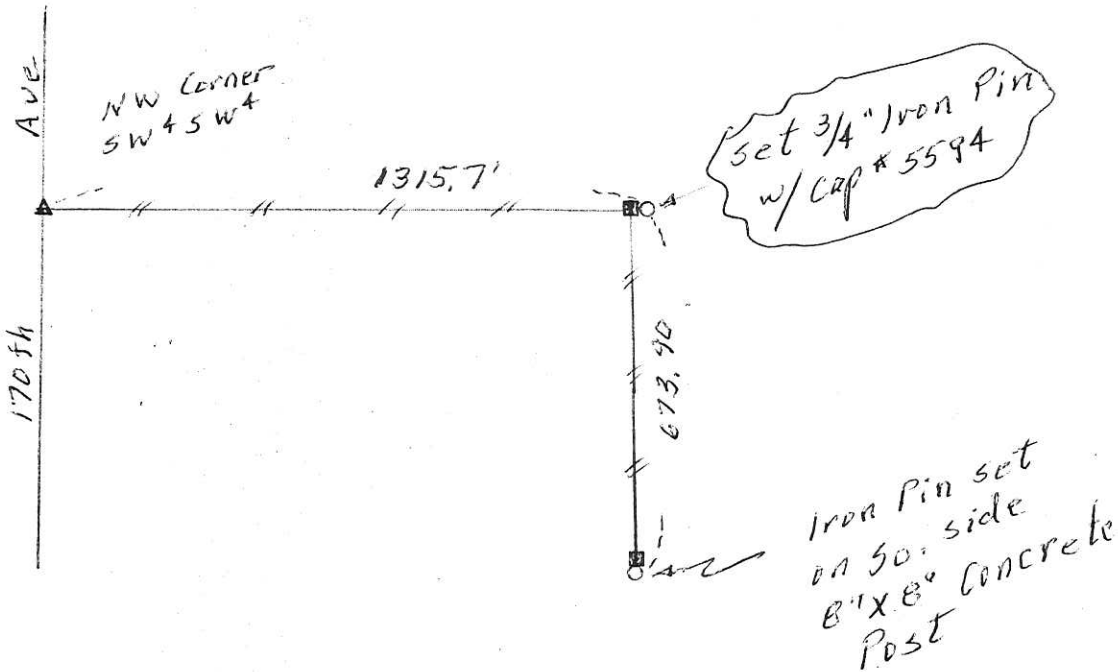
Show reason for preparing this certificate, the evidence and detailed procedures used in establishing the corner positions and monumentation found or placed

Monument Description and Remarks: Set corner on E. side 8" x 8" concrete corner post, Top part of post is broken off. Corner is at intersection of E-W and N-S property line fences.



PLAN - VIEW

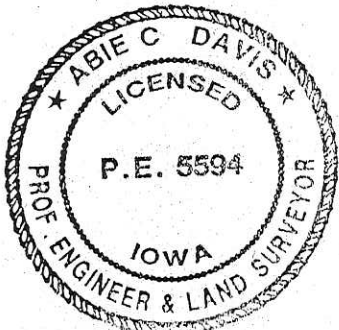
(Show a minimum of three reference ties to durable physical objects, relevant monuments and physical conditions that will enable recovery of the corner.)



I hereby certify that the survey work was completed and this land surveying document was prepared by me or under my direct personal supervision and that I am a duly licensed land surveyor under the laws of the state of Iowa

Signature: Abie C. Davis 11/24/17
Date: 11/24/17
Abie C. Davis, P.E. & L.S. Reg. No. 5594
My license renewal date is December 31, 2017

SEAL



List Corners to be Indexed			
Corners	Section	Twp	Range
NE CORN.	2	77 N	19 W
SW + SW4			

Pd \$1700 cash - Ret Abie Davis