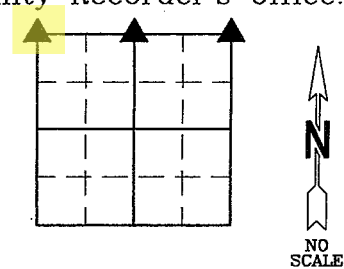


NAOMI ELLIS, RECORDER  
MARION COUNTY IOWA

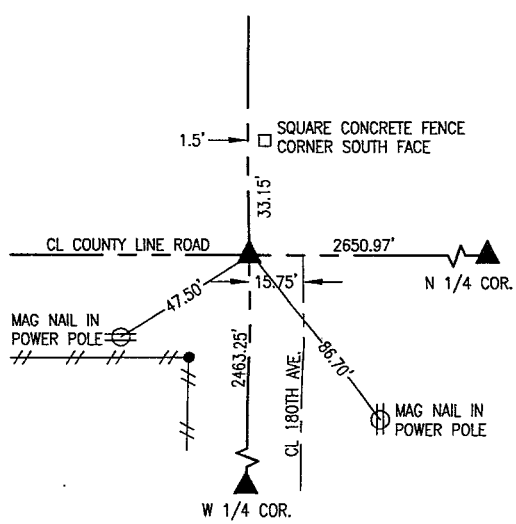
**G** GARDEN & ASSOC. P.O. Box 451, Oskaloosa, Iowa 52577-0451 Phone: (641)672-2526

UNITED STATES PUBLIC LAND SURVEY CORNER CERTIFICATE  
OF

Land Survey Monuments situated in Section 1, Township 77, Range 19, of the Fifth Principal Meridian, MARION County, Iowa.  
Previously recorded in N/A in County Recorder's Office.  
Monument Description and Remarks: SEE BELOW

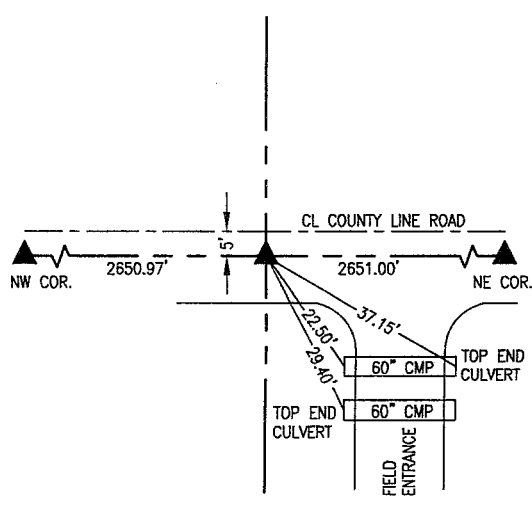


NW COR.



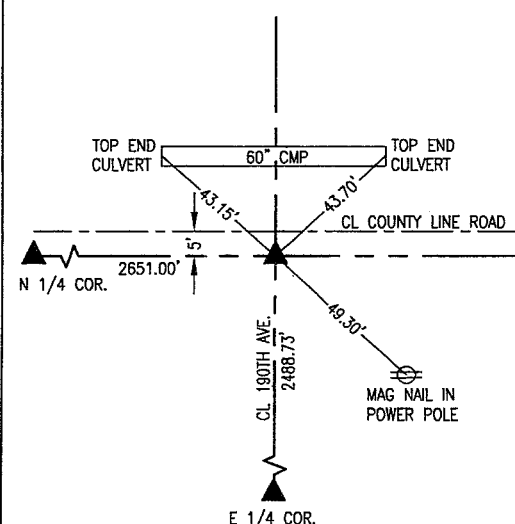
MAY 1, 1975-MARION COUNTY ROAD DEPT:  
FOUND WPA CONCRETE MONUMENT.  
FEB. 11, 1987-MARION COUNTY ROAD DEPT:  
FOUND C.M. SET 1/2" I.P. OVER C.M.  
DEC. 5, 2022-PLS 14416:  
FOUND 5/8" REBAR WITH LARGE YPC 5" DEEP.

N 1/4 COR.



MAY 1, 1975-MARION COUNTY ROAD DEPT:  
FOUND WPA C.M. 3' DEEP. SET 1" IRON PIPE  
OVER C.M.  
JULY 6, 1984-PLS 6708:  
FOUND 1" PIPE 6" DEEP. SET 60D SPIKE  
WITH BLUE TOP OVER PIPE.  
DEC. 5, 2022-PLS 14416:  
FOUND 5/8" REBAR WITH LARGE YPC FLUSH  
WITH SURFACE.

NE COR.



JUNE 4, 1971-JASPER COUNTY ROAD DEPT:  
FOUND 5/8" REROD 3" DEEP IN 4" TILE OVER  
WPA CONCRETE MONUMENT.  
OCT. 22, 1979-PLS 6708:  
FOUND 5/8" REBAR 3" DEEP APPROXIMATELY  
5' SOUTH OF CL COUNTY ROAD.  
DEC. 5, 2022-PLS 14416:  
FOUND 5/8" REBAR WITH LARGE YPC 4" DEEP.

I hereby certify that this land surveying document was prepared and the related survey work was performed by me or under my direct personal supervision and that I am a duly licensed Professional Land Surveyor under the laws of the State of Iowa.

*Randal J. Nugteren* April 1, 2023  
Randal J. Nugteren, P.L.S. Date  
License number: 14416  
My license renewal date is December 31, 2024

SEAL



List Corners to be Indexed			
Corners	Section	Township	Range
NW COR.	1	77	19
N 1/4 COR.	1	77	19
NE COR.	1	77	19

pd 4702 ck - Ret Garden & Assoc.

MAY 1, 1975 FOUND STONE AND  
RETIED

MOLL, PREGON & CAMERON

N.E. Cor SEC 2-77-19

21

