

Found 3" under surface a 4"
 Drilled hole 4' Deep Filled with
 Rock & Concrete & some Pieces
 of Broken A Tile

Set c.m. over 1-2" round Tile
 To P.C.M. 8" under top surface

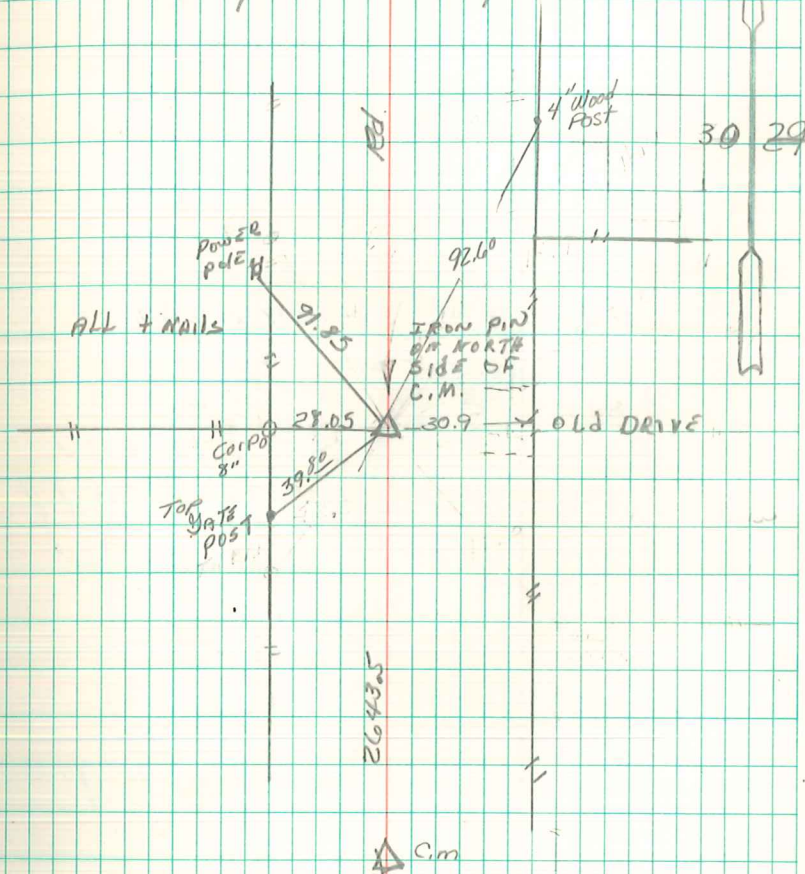
Placed Piece of Concrete on top c.m.

E $\frac{1}{2}$ Cor. 30-77-19

Set- 3-28-41

Notes = Kennedy

Party - shore - odgen



RE.T. 25 July 94

UNDERVEER + PREGIN

5/21/96 Abie DAVIS