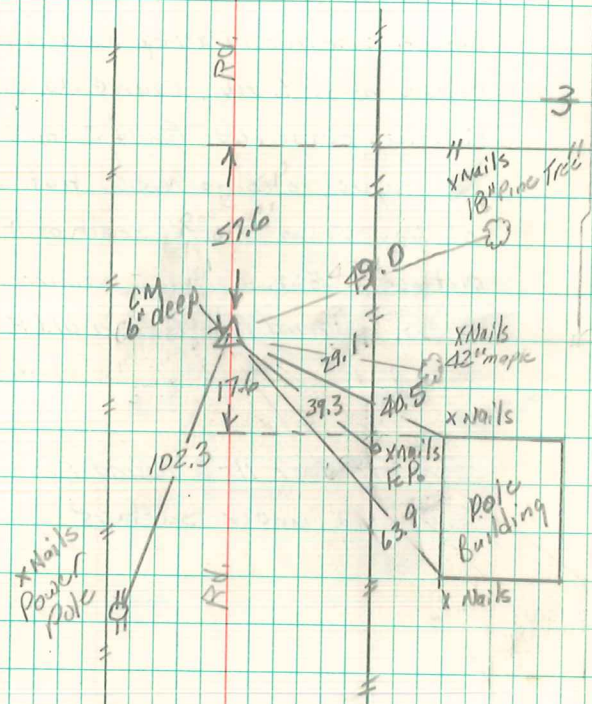


Re-established Cor.  
 Ran Line Between sec. cor. N. & S.  
 Dug hole 12'x12' on Prop. meas. & on line  
 between N.E. & S.E. corners of section.  
 there has been a cut made here by  
 Road Constr. Corner was probably destroyed  
 Frank Shuler nephew of abc shuler  
 who saw N.J. Watkins set this corner  
 in 1883, stated the board fence that was  
 set on line with original cor. was due  
 east of point of Established corner.  
 all E. lines E. & W. comes to this point also  
 on line N. & S. & Dist. checks with Gov. Dist.

Set C.M. over some Crockery & Put  
 12" Iron Rod on south side C.M.  
 Put Rock on top C.M.

E $\frac{1}{4}$  cor 3-77-19  
 Set- 7-8-41 RE-TIED & Lowered 6"  
 10-17-85  
 Notes - Kennedy C.J. Moll  
 Party - Shore & Luther R. STONE



FOUND & RETIED 10-17-85 C.J. Moll, R. STONE  
 Found C.M. with 1 1/2" Pipe (Garden Assoc) Along EAST  
 Side; Lowered C.M. 6" By breaking off;  
 drove pipe down 6";

7/30/93  
 Abie Davis