



Document 17-5132

Book 2017 Page 5132 Type CORNR Pages 1  
Date 11/21/2017 Time 12:18 PM  
Rec Amt \$7.00

KAREN SCHWANEBECK, RECORDER  
MARION COUNTY IOWA

Prepared by Abie C. Davis, P.E. & L.S., 1428 Oregon St., Knoxville, IA 50138 (641) 842-5863

### UNITED STATES PUBLIC LAND SURVEY CORNER CERTIFICATE

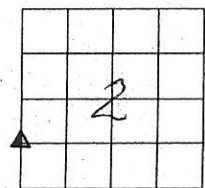
OF

Land survey Monuments situated in Section 2, Township 77N, Range 19W, of the Fifth Principal Meridian, Marion County, Iowa.

Previously recorded in N/A in County Recorders Office.

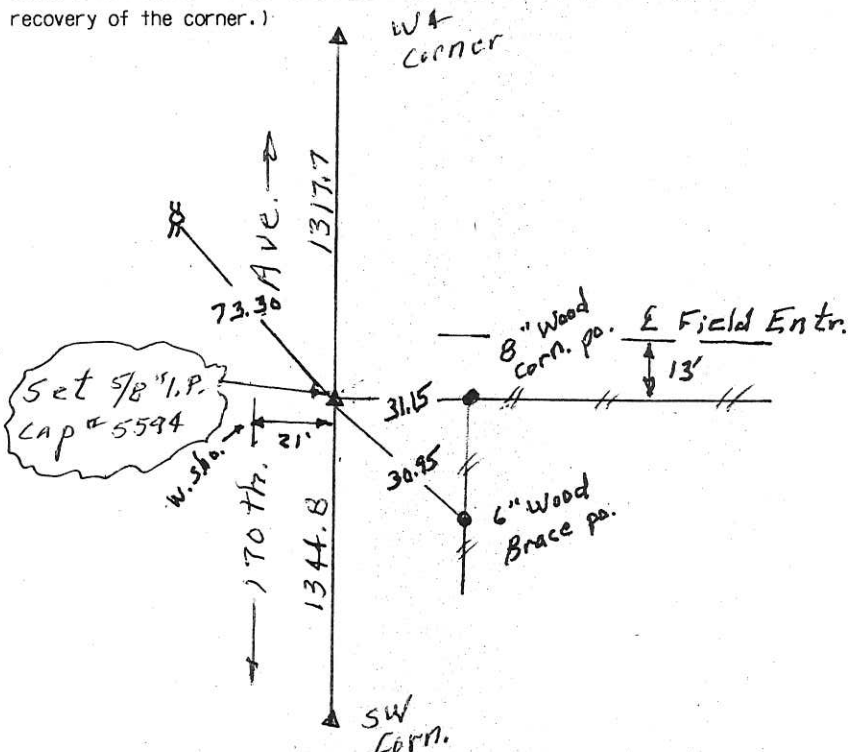
Show reason for preparing this certificate, the evidence and detailed procedures used in establishing the corner positions and monumentation found or placed

Monument Description and Remarks: Set corner in line with property line fence east and on line between the SW corner and the W4 corner



### PLAN - VIEW

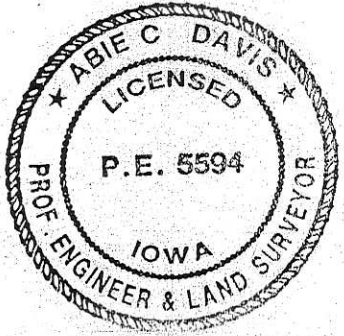
(Show a minimum of three reference ties to durable physical objects, relevant monuments and physical conditions that will enable recovery of the corner.)



I hereby certify that the survey work was completed and this land surveying document was prepared by me or under my direct personal supervision and that I am a duly licensed land surveyor under the laws of the state of Iowa

Signature: Abie C. Davis  
Abie C. Davis, P.E. & L.S.  
Date: 11/24/17 Reg. No. 5594  
My license renewal date is December 31, 2017

SEAL



List Corners to be Indexed

Corners	Section	Twp	Range
NW Corn	2	77N	19W
SW+SW			

Pd \$700 Cash - Ret Abie Davis