



Document 20-1695

Book 2020 Page 1695 Type CORNR Pages 1
Date 4/13/2020 Time 11:52 AM
Rec Amt \$7.00

KAREN SCHWANEBECK, RECORDER
MARION COUNTY IOWA

Prepared By: J. Brian Morrissey, Morrissey Surveying & Consulting, LLC, 1405 Hwy. G28, Otley, Ia. 50214, 515-480-2531

UNITED STATES PUBLIC LAND SURVEY CORNER CERTIFICATE OF

Land Survey Monuments situated in Section 9, Township 77N, Range 19W, of the Fifth Principal Meridian, Marion County, Iowa.
Previously recorded in Bk. 1, P. 95 in the County Recorder's Office.
(book, page, document number, etc.)

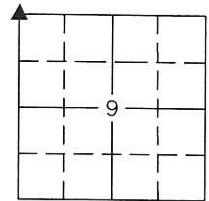
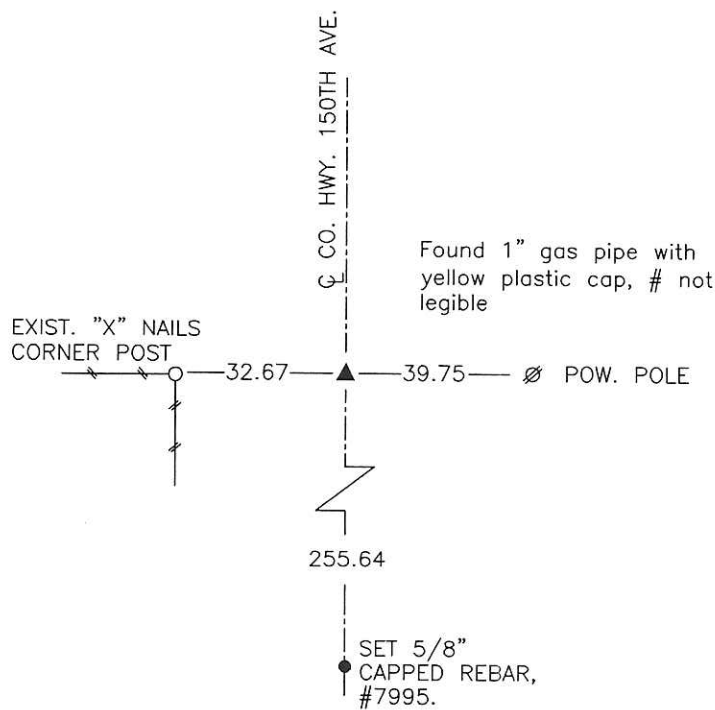
(Show reason for preparing this certificate, the evidence and detailed procedures used in establishing the corner positions and monumentation found or placed.)

Monument Description and Remarks: Found 1" gas pipe with yellow plastic cap, # not legible.
Accepted position. Previous ties altered or obliterated.

This Corner was used for a Plat of Survey in the NW 1/4 of the NW 1/4 of Sec. 9, recorded in Bk. 2019, P. 1601.

PLAN VIEW

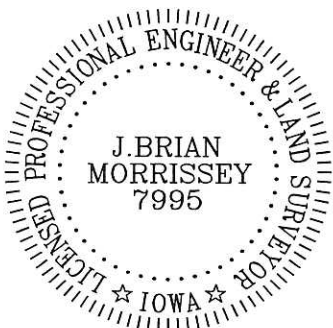
(Show a minimum of three reference ties to durable physical objects, relevant monuments and physical conditions that will enable recovery of the corner.)



NW Corner, NW 1/4, Section 9

Date of Survey: 9/6/19

NOTE: ALL TIES TO BRASS DISK OR YELLOW/ORANGE SURVEY MARKER UNLESS NOTED.



I hereby certify that this land surveying document was prepared and the related survey work was performed by me or under my direct personal supervision and that I am a duly Licensed Land Surveyor under the laws of the state of Iowa.

Signature: J. Brian Morrissey Date: 4/9/20
J. Brian Morrissey

License number 7995.

My license renewal date is December 31, 2021

999-18-3/5

R. S. Hoock - Ret Brian Morrissey

Restablished con

Set c.m. over 1-2" D Tile

N.E. Cor 8-77-19

Set - 7-17-41

Notes = Kennedy

Party - Shore, Lutter

