

N

Found sandstone 16"x12"x16" & 1-2" thick

Lowered 1-2" tile in its original UP-Right
Position & set C.M. Placed Stone on
To P.C.M.

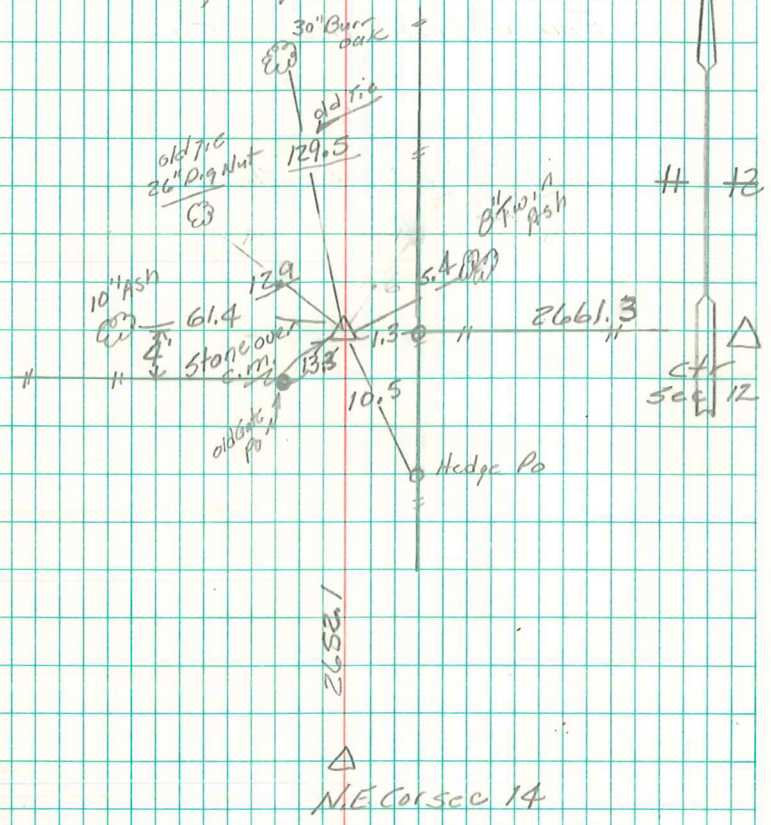
E. 1/4 cor sec 11-77-20

Set: 8-28-40

Notes: Thomas - Wignall, mundell

Frazier, Harper.

N



NE Cor. sec 14