

Found Sandstone 15'x12"x8" over 2-2"  
Tile, one O Tile & 1 Round Tile

Set C.M. on round tile.  
Stone on top C.M. sticking above surface.

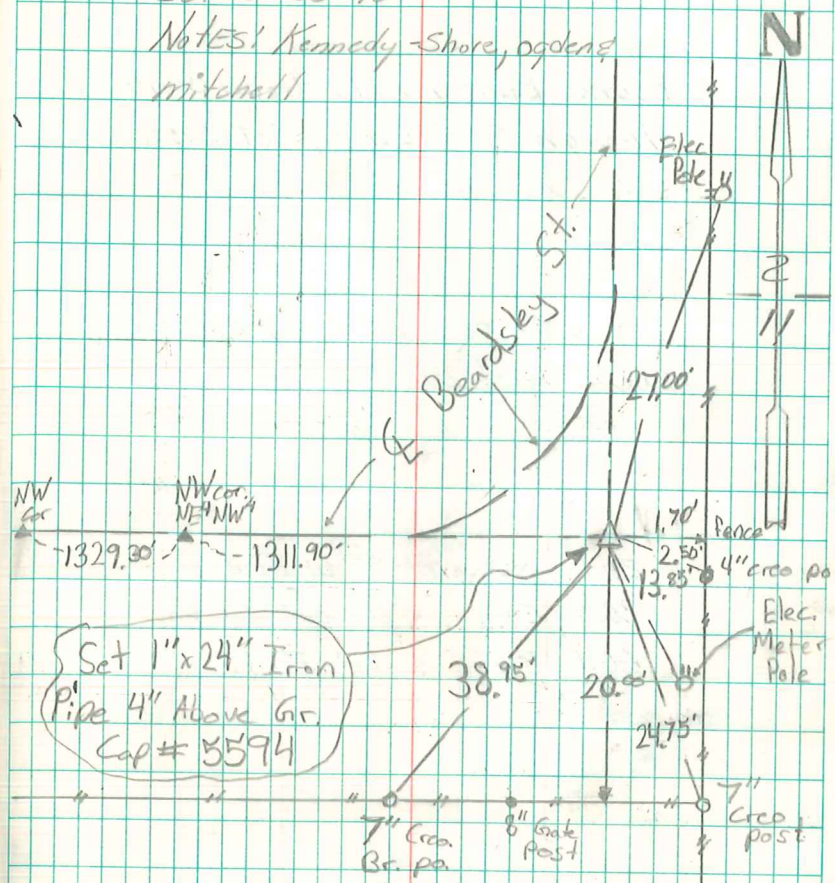
24.7' N.E. of 12" oak Gate Po.  
62.1' S.E. " 8" " Brace "  
52.8' S.W. " 10" " Trcc  
68.1' N.W. " 12" " "

CORNER WAS OBLITERATED BY ROAD CONSTRUCTION IN 1953.  
RESET CORNER FROM BEST EVIDENCE. SET 1" x 42" IRON  
PIPE 4" ABOVE GROUND WITH CAP # 5594  
ABIE C. DAVIS 5/13/07

N. 1/4 Corsec 11-77-20

Set-8-30-40

Notes: Kennedy-Shore, Ogden & Mitchell



Set 1" x 24" Iron  
Pipe 4" Above Gr  
Cap # 5594

5/13/07 SET NEW TIES  
ABIE C. DAVIS  
# 5594  
6/12/09 Abie Davis