

Found 2 Granit Rocks one 4"x3"x2"
 1-11"x6"x5" over 2-2" round tile
 Right where we set man.

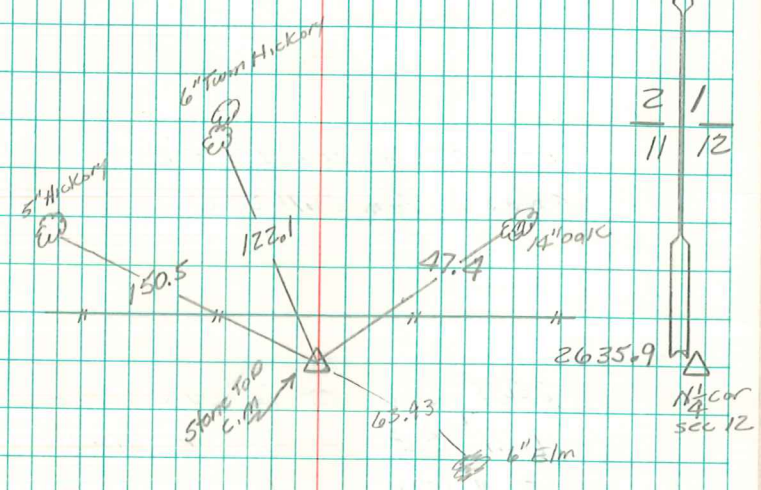
Set C.M. over one 2" round tile on END.
 11"x6"x5" Stone top C.M.

150.5' S.E. of 5" Hickory Tree
 122.0' S.E. " 6" Twin Hickory "
 47.4' S.W. " 14" OAK "

N.E. Cor sec 11-77-20

Set - 8-30-40

Notes: Kennedy - shore, Mitchell -
 & Ogden.



2 1
 11 12

N.E. Cor
 sec 12