

INDEX LEGEND

COUNTY: MARION
SECTION: 12, T-77N, R-20W
CORNER: N 1/4 Corner

SURVEYOR & SURVEY COMPANY:
Jason S. Lowry, P.L.S.
Lowry Land Services, L.L.C.
752 Diamond Trail Rd., Searsboro, Iowa 50242

PREPARED BY AND RETURN TO:
Jason S. Lowry, P.L.S.
752 Diamond Trail Rd., Searsboro, Iowa 50242
(641) 521-1160, lowrylandservices@gmail.com

Instr. Number: 22-3731
BK: 2022 PG: 3731
Recorded: 7/12/2022 at 9:12:00.0 AM
County Recording Fee: \$7.00
Iowa E-Filing Fee: \$3.00
Combined Fee: \$10.00
Revenue Tax:
NAOMI ELLIS, RECORDER
Marion County, Iowa

UNITED STATES PUBLIC LAND SURVEY CORNER CERTIFICATE

Land Survey Monuments situated in Section 12, Township 77 North, Range 20 West of the Fifth Principal Meridian, Marion County, Iowa. Not previously recorded.

MONUMENT DESCRIPTION & REMARKS

N 1/4 Cor. - Found 5/8" rebar using Marion County Engineer's ties.

No certificate of record. This corner was used for a plat of survey in the SW 1/4 of the NE 1/4 of Section 12.

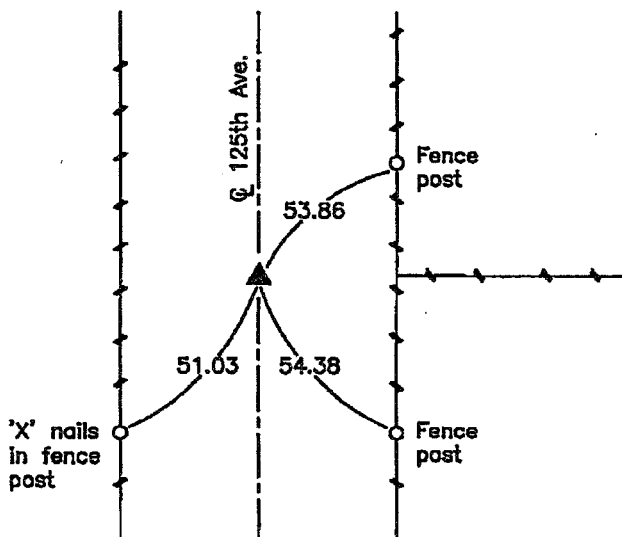
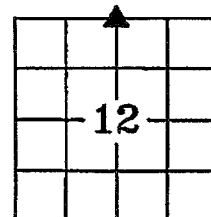


PLAN VIEW

No Scale

N 1/4 Corner
Section 12

Found 5/8" rebar.



NOTE: ALL TIES ARE PLUMB MEASUREMENTS TO ORANGE SURVEY MARKER UNLESS NOTED.



I hereby certify that this land surveying document was prepared and the related survey work was performed by me or under my direct personal supervision and that I am a duly Licensed Land Surveyor under the laws of the State of Iowa.

My license renewal date is 12/31/2023

Pages covered by this seal: 1 - 1

LEGEND

- ▲ Section Corner Found
- △ Section Corner Set
- Existing Fence

LAND CORNERS TO BE INDEXED

Land Corner	Section	Township	Range
N 1/4 Corner	12	77	20

Jason S. Lowry
Jason S. Lowry Iowa Lic. No. 22291

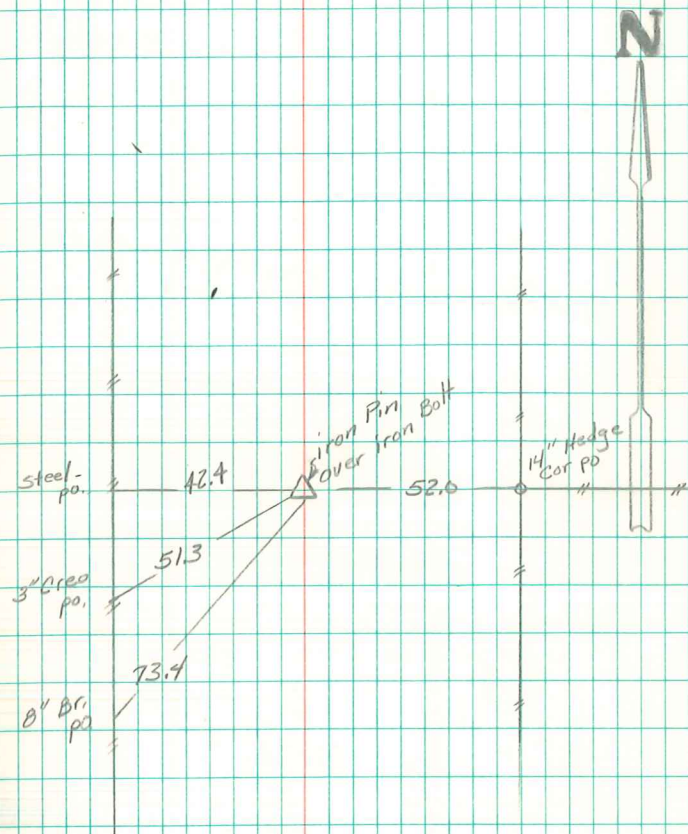
7/11/22
Date

LOWRY LAND SERVICES, L.L.C. 752 DIAMOND TRAIL RD., SEARSBORO, IOWA 50242, 641-521-1160

PROJ. NO. 5622

DATE OF SURVEY: 07/07/22

CERT NO. 1/1

S¹/₄ Corner Sec 1-77-20

RETIRED 7/2/93
Abie Davis.