

Found sandstone Broken  
in 3 Pieces Large one was  
14"x9"x4" on top of 2-2 1/2" tile

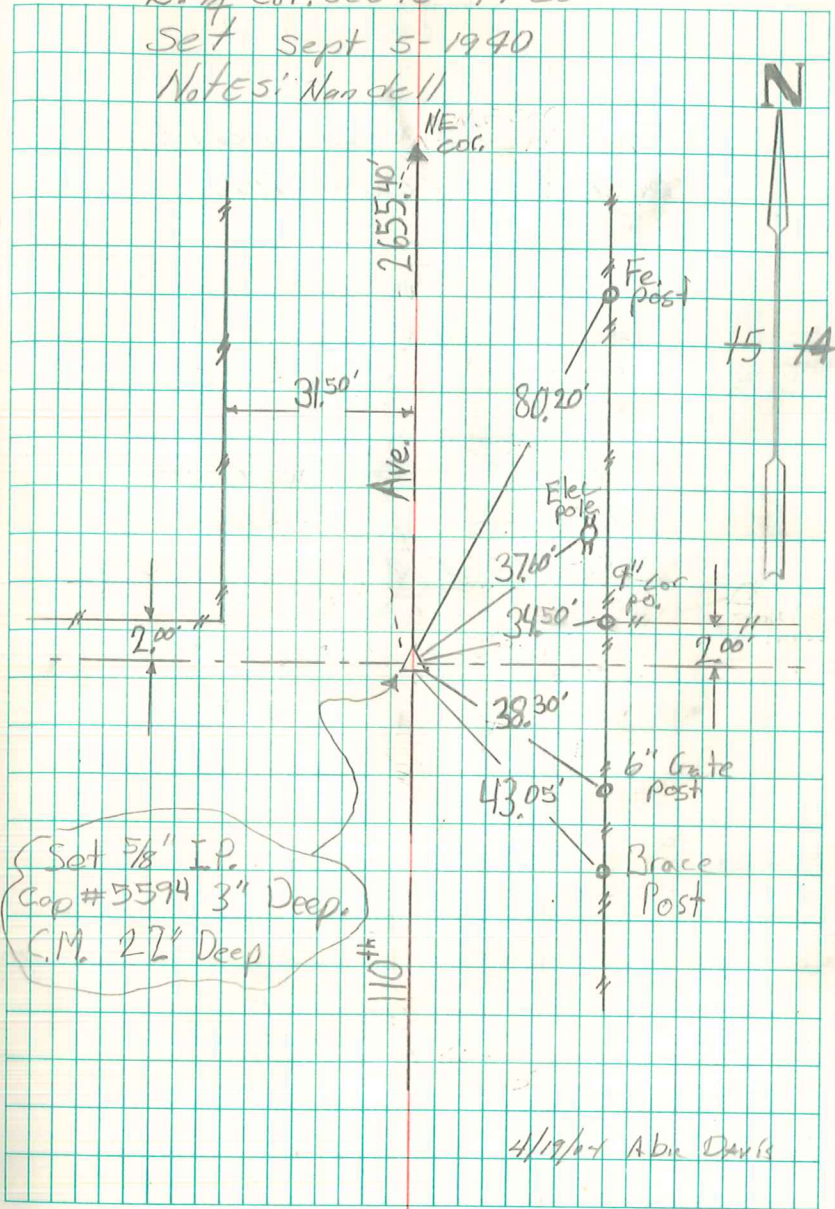
Lowered one tile in position

Set C.M. on top of tile 14" Deep  
Put Large Stone Top C.M.

E. 1/4 Cor. sec 15-77-20

Set Sept 5-1940

Notes: Nandell



Set 5/8" I.P.  
Cop # 5594 3" Deep.  
C.M. 27" Deep

4/19/41 Abie Davis