

Prepared by Abie C. Davis, P.E. & L.S., 1428 Oregon St., Knoxville, IA 50138 (641) 842-5863

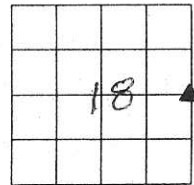
UNITED STATES PUBLIC LAND SURVEY CORNER CERTIFICATE OF

Land survey Monuments situated in Section 18, Township 77N, Range 20W, of the Fifth Principal Meridian, Marion County, Iowa.

Previously recorded in N/A in County Recorders Office.

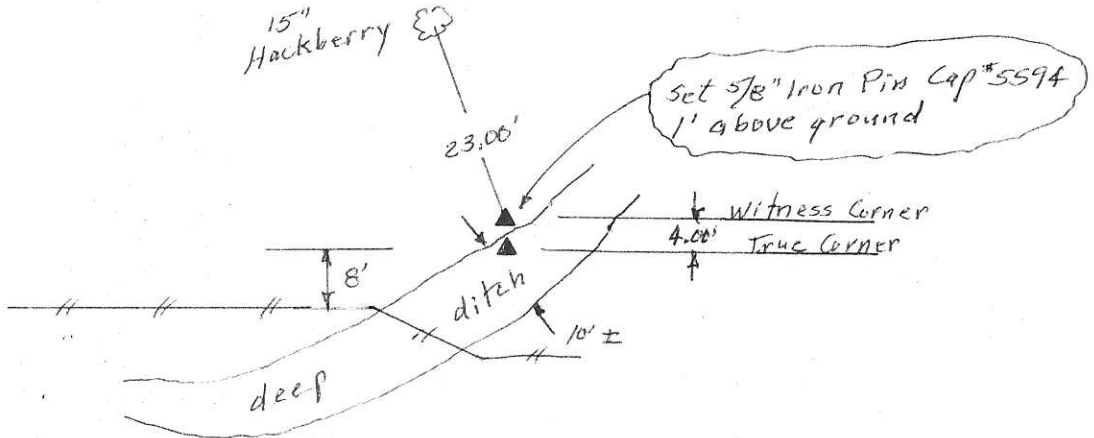
Show reason for preparing this certificate, the evidence and detailed procedures used in establishing the corner positions and monumentation found or placed

Monument Description and Remarks: All monuments and witness monument were eroded by deep ditch wash. Corner falls in deep ditch with sandstone ditch bottom, set witness corner 4.0 ft north of true corner. 5/8" Iron Pin 1.0' above ground.



PLAN - VIEW

(Show a minimum of three reference ties to durable physical objects, relevant monuments and physical conditions that will enable recovery of the corner.)



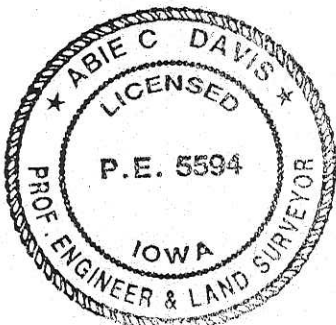
I hereby certify that the survey work was completed and this land surveying document was prepared by me or under my direct personal supervision and that I am a duly licensed land surveyor under the laws of the state of Iowa

Signature: Abie C. Davis

Date: 10/4/16 Abie C. Davis, P.E. & L.S. Reg. No. 5594

My license renewal date is December 31, 2017

SEAL



List Corners to be Indexed			
Corners	Section	Twp	Range
E4	18	77N	20W

Found Restablished

Set mon. on Line between sec
Corners N.E.S. & on line of old
established Fences E.&W. this
Cor is in a deep ditch, with
tile & stone set by N.J. Watkins
33.0' West of True Corner. Evidently
Taken out by erosion.

Set - mon over 1-2" O tile standing
on END at True Cor
Granit Rock 10" X 6" X 5" TOP C.M.

8.3' N.W. of Gas Pipe in Ground
27.6' N.W. " x Nail in 24" Elm Tree
37.2' S.E. " " " " 5" Triple Elm
50.0' S.E. " " " " 4" Walnut
118.5' West " " " " 18" Elm

E 1/4 Cor Sec 18-77-20

Set - 10-15-41

Notes: Kennedy - Wells Luther &
Shore.

