

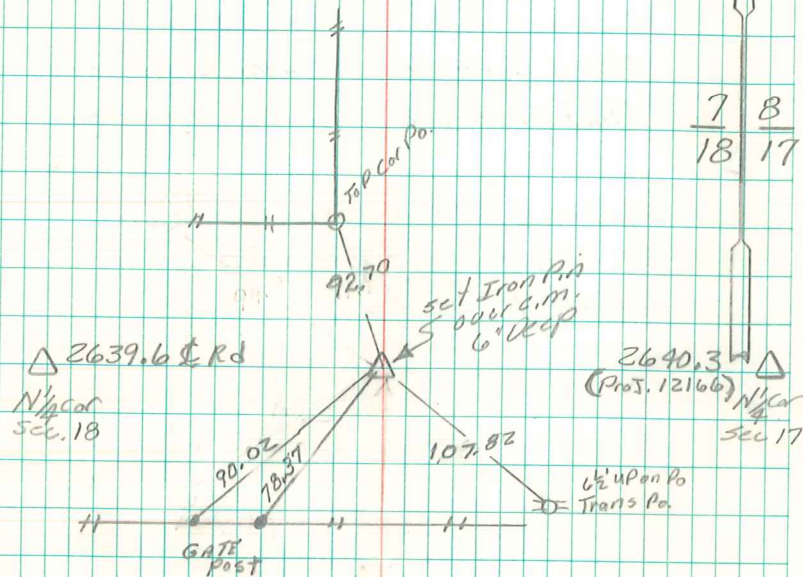
Found 2-2" Round tile, lowered
one tile in Position.

set c.m. on tile 12" under surface
Rock top c.m.

N.E. Cor sec 18-77-20

Set: Aug -31-40

Notes: Kennedy - Shore, Ogden &
Mitchell, Mandell.



Retired 3-14-94

Abie Davis

John Nilles 5/13/98