

Prepared by Abie C. Davis, P.E. & L.S., 1428 Oregon St., Knoxville, IA 50138 (641) 842-5863

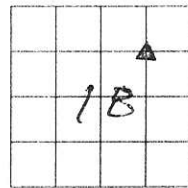
# UNITED STATES PUBLIC LAND SURVEY CORNER CERTIFICATE OF

Land survey Monuments situated in Section 18, Township 77N, Range 20W, of the Fifth Principal Meridian, Marion County, Iowa.

Previously recorded in N/A in County Recorders Office.

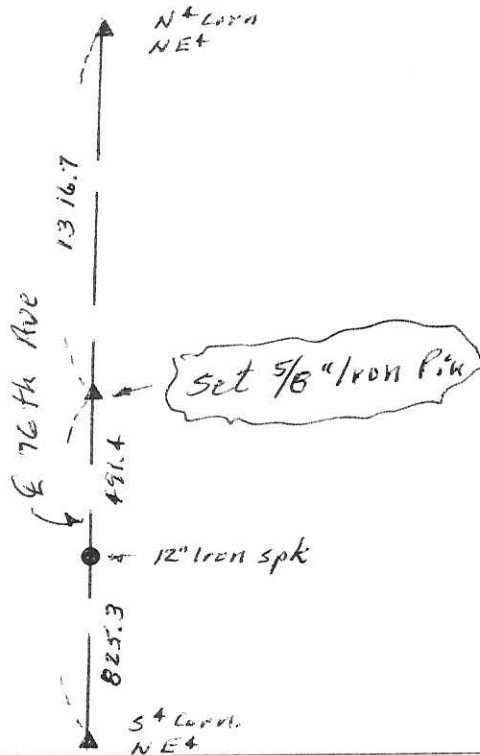
Show reason for preparing this certificate, the evidence and detailed procedures used in establishing the corner positions and monumentation found or placed

Monument Description and Remarks: Set 5/8" Iron Pin on E Rd. at mid point and on line between N<sup>+</sup> corn of the NE<sup>+</sup> and the 5<sup>+</sup> corner of the NE<sup>+</sup> of Sec. 18



## PLAN - VIEW

(Show a minimum of three reference ties to durable physical objects, relevant monuments and physical conditions that will enable recovery of the corner.)



I hereby certify that the survey work was completed and this land surveying document was prepared by me or under my direct personal supervision and that I am a duly licensed land surveyor under the laws of the state of Iowa

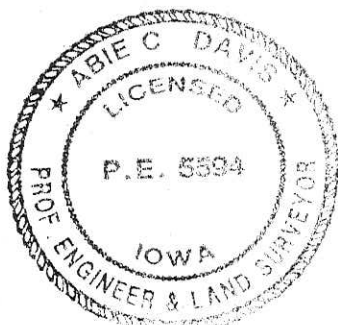
Signature: Abie C. Davis

Abie C. Davis, P.E. & L.S.

Date: 9/26/16 Reg. No. 5594

My license renewal date is December 31, 2017

SEAL



### List Corners to be Indexed

Corners	Section	Twp	Range
NW Corn	18	77N	20W
SE <sup>+</sup> NE <sup>+</sup>			