

Found sandstone 10"x8"x2"  
over 2-2 1/2" tile, right where  
we set man.

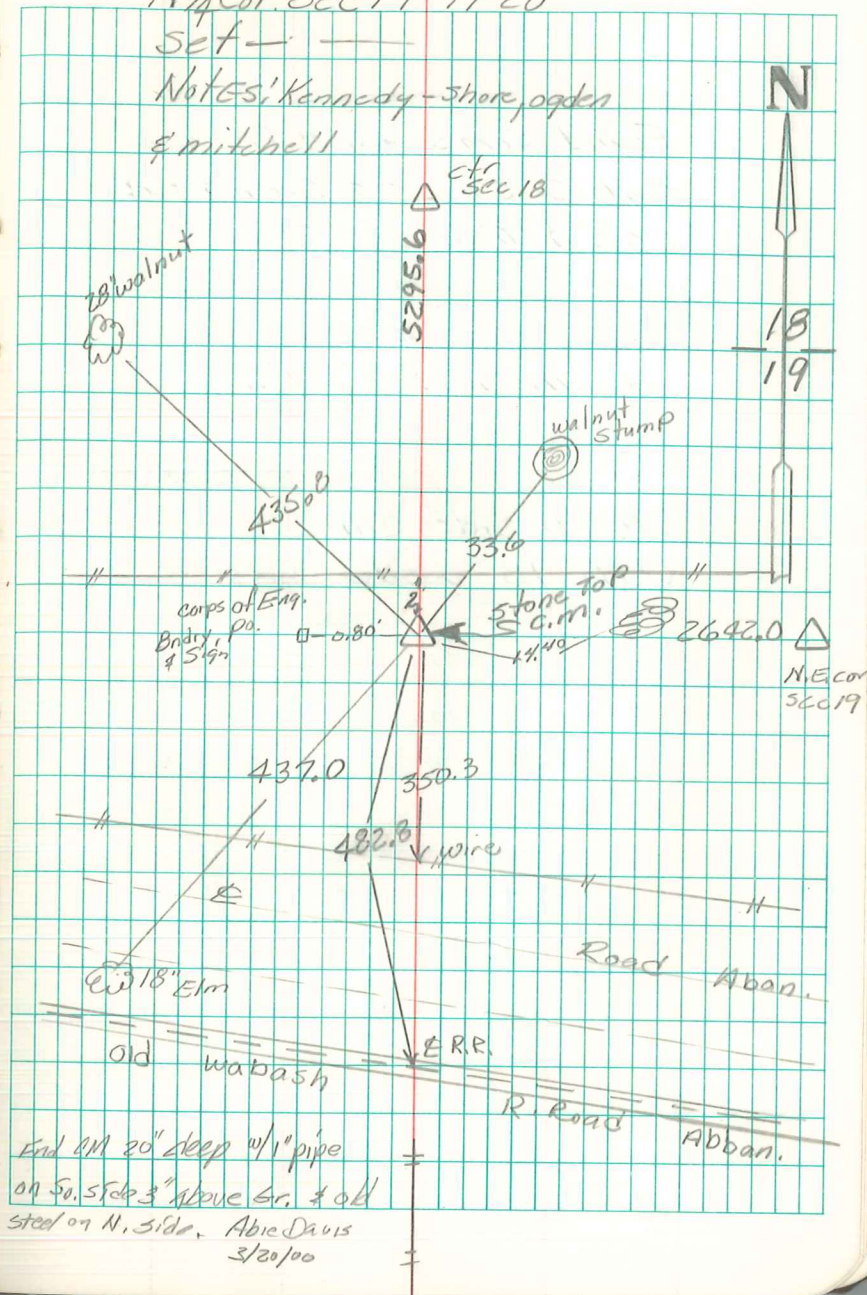
Set c.m. on one tile lowered  
in place.

C.M. 22" under top surface  
with stone on top.

N 1/4 Cor. Sec 19-77-20

Set - - -

Notes: Kennedy - Shore, Ogden  
& Mitchell



End of 20" deep w/1" pipe  
on S. side 3" above gr. & old  
steel on N. side. Abie Davis  
3/20/00