

Found Iron Rod 2"x2"x42" Long  
Right where we set c.m.

Set c.m. with Iron Rod on  
North side c.m.

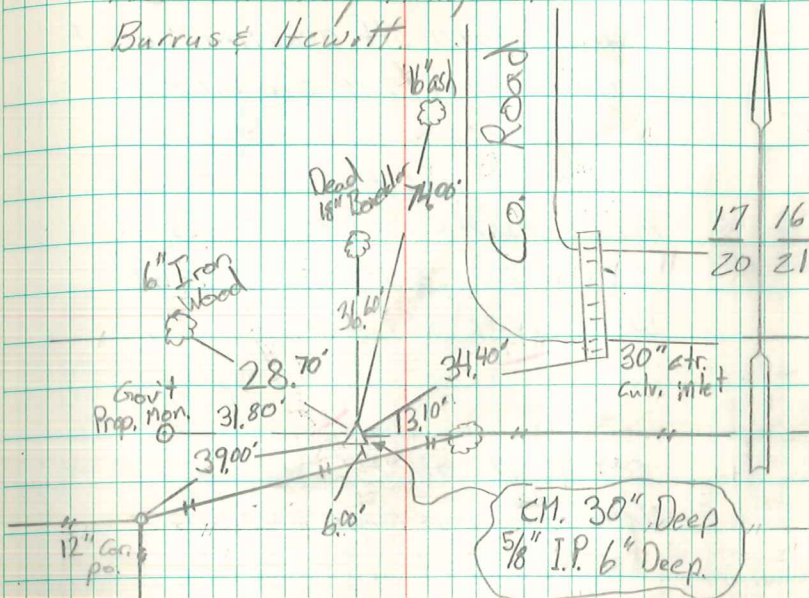
30.5' E. of 12" oak Gate Po  
37.9' S.E. " 12" Cluster of Elms  
8.7' West " x Nails in 5" oak Gate Po  
89.3' N.W. " " " " 12" willow  
32.2' N.W. " " " " 5" Elm

N.E. Cor Sec 20-77-20

Set - 9-5-40

Not Es: Kennedy - Wells, Crozier

Burrus & Hewitt.



Retied 13 mar 1979

Found 1 1/2" Iron Pipe  
over Conc. Mon. 2 1/2' Deep

BRENT-MECKOR  
Corp. Engrs

SET STEEL POST WITNESS

0.3' EAST

10/17/94 Mike Davis