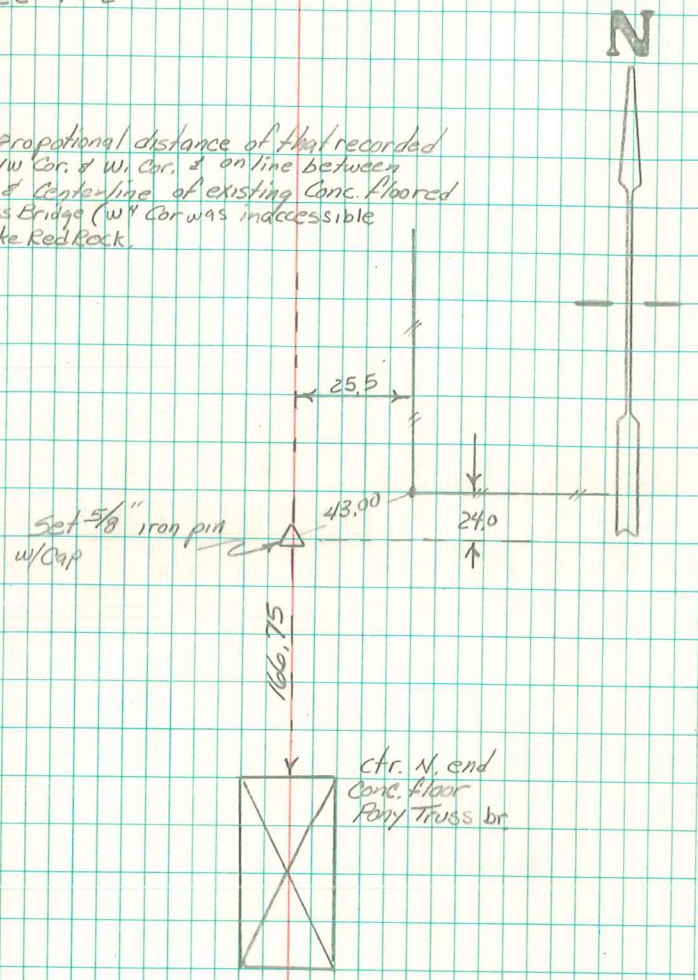


SW Cor NW<sup>4</sup> NW<sup>4</sup>

Sec. 22-77-20

Set at proportional distance of that recorded  
From NW Cor. & W. Cor. & on line between  
NW Cor. & centerline of existing Conc. floored  
pony truss bridge (W<sup>4</sup> Cor was inaccessible  
under lake Red Rock.



2/17/96  
Abie Davis