

Found witness cor. Tile & stone

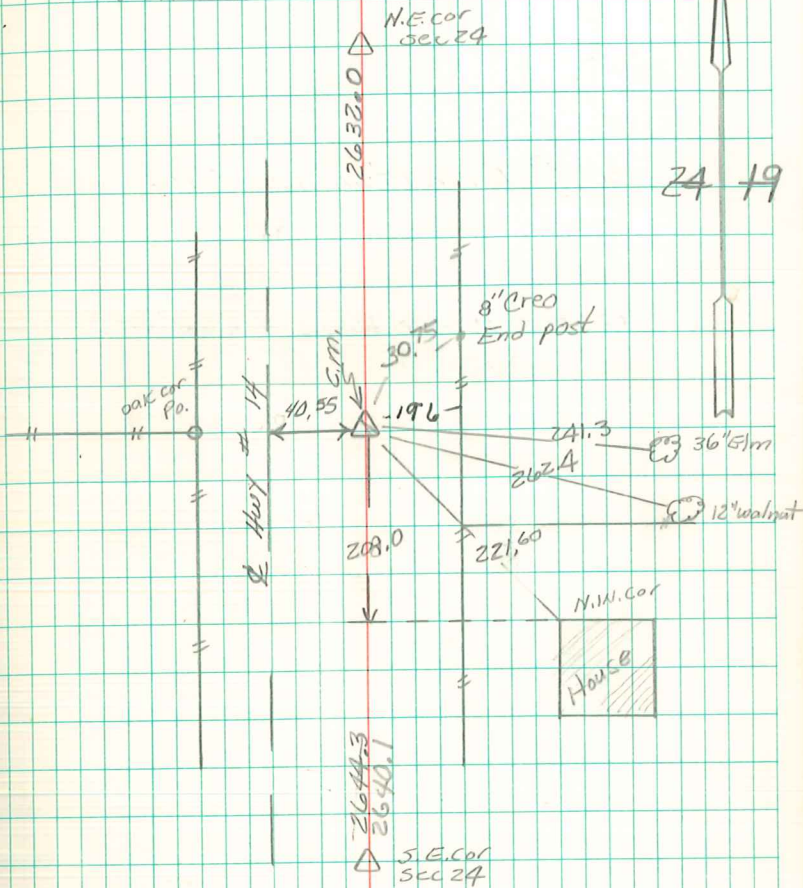
set C.M. 6.6' south of witness
stone on original cor.

Put a Lime Rock 8"x6"x6" over
top C.M.

E 1/4 cor sec 24-77-20

Set - July - 18 - 1941

Notes: Kennedy - Wells, Ford &
Richman



End Conc Man w/ iron pin Center Retired 7/6/01 Abie Davis
19" deep in E. Row ditch. Set 5/6
iron pin cap #5594 on top.