

Found Granit balder 16"x12"x6"
 over 2-2" Q tile.
 Right where we set c.m.

Set c.m. over 1-2" Q tile
 Lowered in Place.

set stone on top c.m.

- 58.0' N.W. of x Nails in 10" oak corb
- 151.7' N.E. " " " " 42" Elm tree
- 97.0' N.E. " " " " 12" Twin Elm "
- 3.4' West of East Lane Fence
- 204.0' N.W. of N.W. cor Corn Crib.

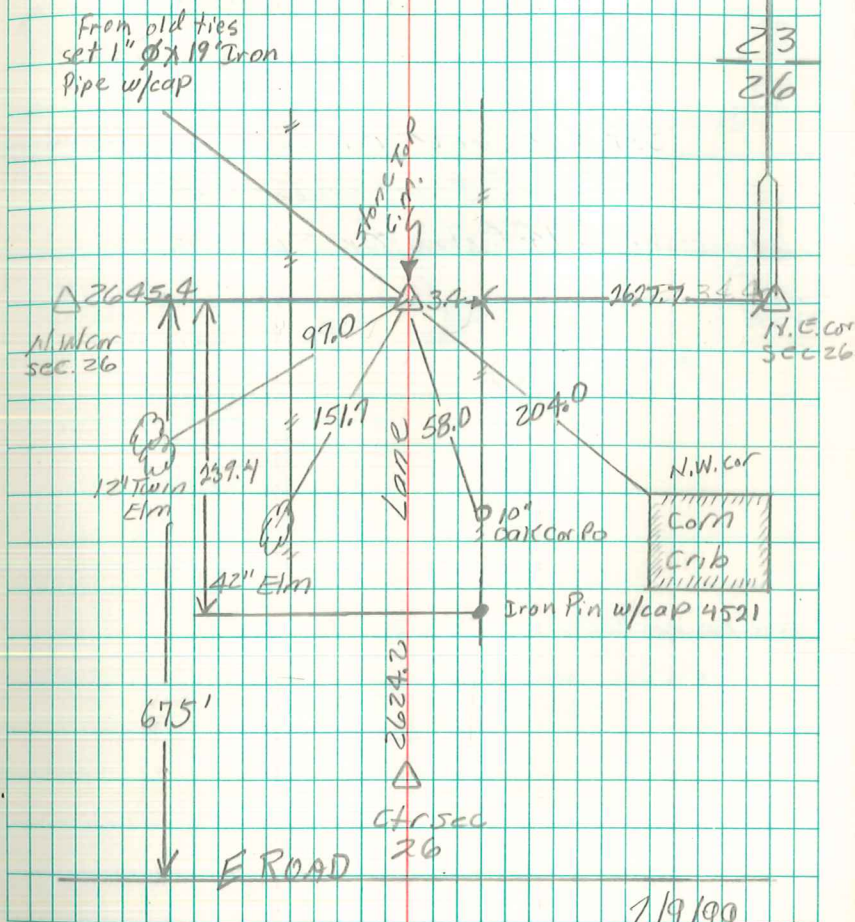
N 1/4 Cor Sec 26.-77-20

Set - 8-28-40

Notes: Kennedy - Wells, Crozier
 Burrus & Hewitt



23
 26



2/9/99
 Abie Davis