

Found Granit Rock 12"x9"x7"
 over 2-2" round tile
 Right where we set mon.

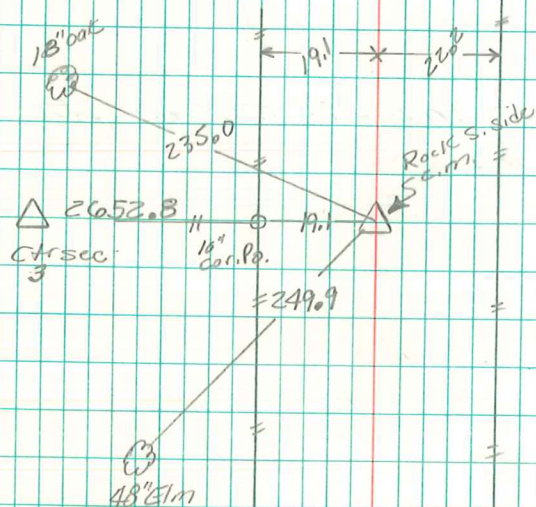
Set C.M. on one tile standing on END.
 Rock on south side C.M.
 C.M. level with Top Ground.

249.9' N.E. of 48" Elm Tree
 19.1' East " 10" Cor Po.
 235.0' " " 18" oak Tree

E. 1/4 cor sec 3-77-20

Set 8-30-40

Notes: Kennedy - Shore, Ogden &
 Mitchell.



2652.5
 N.E. cor
 sec 10