

Instr. Number: 22-5702  
 BK: 2022 PG: 5702  
 Recorded: 11/2/2022 at 12:46:08.0 PM  
 County Recording Fee: \$7.00  
 Iowa E-Filing Fee: \$3.13  
 Combined Fee: \$10.13  
 Revenue Tax:  
 NAOMI ELLIS, RECORDER  
 Marion County, Iowa

PREPARED BY & RETURN TO TERRY COADY, SNYDER & ASSOCIATES, INC. 2727 SW SNYDER BLVD, ANKENY, IOWA 50023 (515) 964-2020

## UNITED STATES PUBLIC LAND SURVEY CORNER CERTIFICATE OF

Land Survey Monuments situated in Section 3, Township 77 N, Range 20 W, West of the Fifth Principal Meridian, MARION County, Iowa. Previously recorded in Book 1, Page 440 in County Recorder's Office.  
 (book, page, document number, ect.)

(Show reason for preparing this certificate, the evidence and detailed procedures used in establishing the corner positions and monumentation found or placed.)

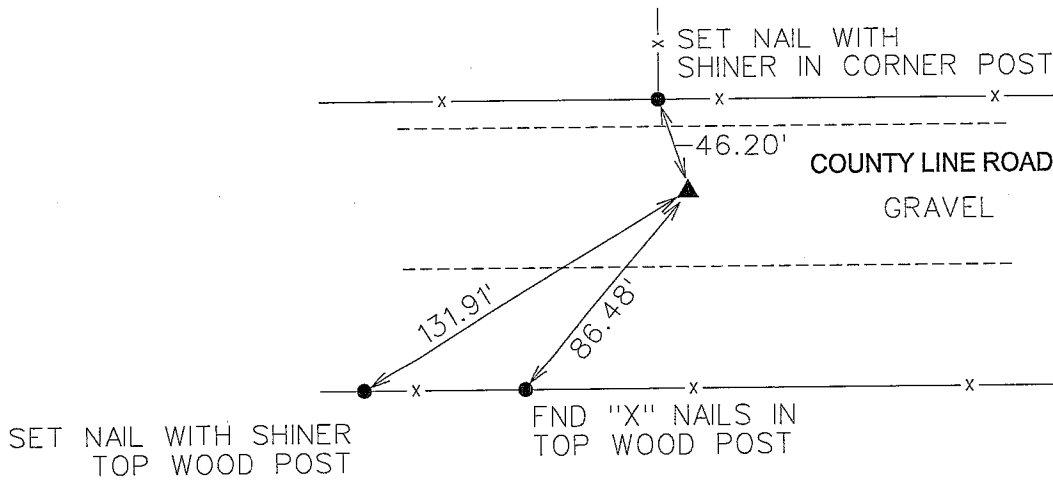
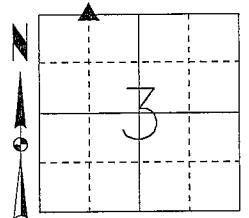
### Monument Description and Remarks:

THE EXISTING CORNER CERTIFICATE RECORDED IN BOOK 1 PAGE 440 OF THE MARION COUNTY RECORDER'S OFFICE INDICATED THAT THE NORTHWEST CORNER OF THE NORTHEAST FRACTIONAL 1/4 OF THE NORTHWEST FRACTIONAL 1/4 IS MONUMENTED WITH A 1/2" REBAR WITH A YELLOW PLASTIC CAP # 3321. SEARCH AREA USING A METAL DETECTOR AND FOUND 1/2" REBAR WITH ORANGE PLASTIC CAP NUMBERS ILLEGIBLE AND ACCEPTED FOUND MONUMENT AS THE SECTION CORNER. THIS CERTIFICATE IS BEING PREPARED BECAUSE THERE ARE NO LONGER THREE VALID TIES OF RECORD.

### Plan-View

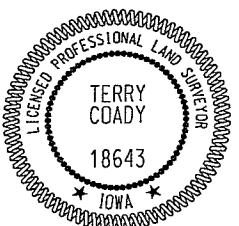
(Show a minimum of three reference ties to durable physical objects, relevant monuments and physical conditions that will enable recovery of the corner.)

NW CORNER NE FRL 1/4 NW FRL 1/4  
 FND 1/2" REBAR  
 ORANGE PLASTIC CAP #ILLEGIBLE  
 4" DEEP



NOTE: ALL DISTANCES MEASURED HORIZONTAL UNLESS OTHERWISE NOTED.

jdpoole  
 10/24/2022  
 P:\Survey\Section\_Corners\S&A\_Section\_Certificate\TWP\_RNG\_SEC\_PROJECT\_NUM\77\_20\_03\_NWENW\_1221345.dgn



I hereby certify that this land surveying document was prepared and the related survey work was performed by me or under my direct personal supervision and that I am a duly licensed Professional Land Surveyor under the laws of the State of Iowa.  
*Terry Coady* 11-2-2022  
 Terry Coady PLS Date  
 License Number 18643  
 My License Renewal Date is December 31, 2023  
 Pages or sheets covered by this sect:  
 SHEET 1 OF 1

### List Corners to be Indexed

Corners	Section	Twp	Range
NW CORNER NE FRL 1/4 NW FRL 1/4	3	77	20
SE CORNER SW 1/4 SW 1/4	34	78	20

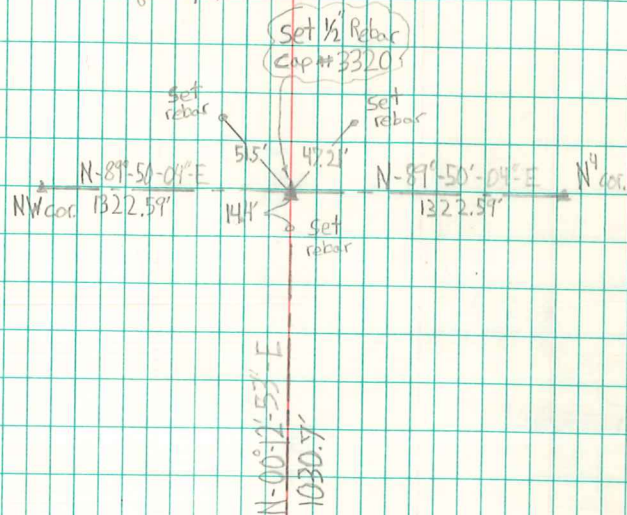
TECH: JDP

PN: 122.1345

DATE: 10-17-22

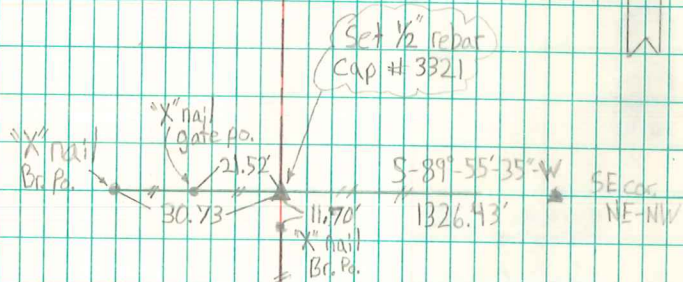
NW cor NE-NW Sec. 3-77-20

Set on line + Equal split



SW cor NE-NW Sec. 3-77-20

Set at fence Intersection

Retied 12-31-99  
Henry S. Oakes