

Instr. Number: 22-5704  
 BK: 2022 PG: 5704  
 Recorded: 11/2/2022 at 12:46:10.0 PM  
 County Recording Fee: \$7.00  
 Iowa E-Filing Fee: \$3.13  
 Combined Fee: \$10.13  
 Revenue Tax:  
 NAOMI ELLIS, RECORDER  
 Marion County, Iowa

PREPARED BY & RETURN TO TERRY COADY, SNYDER & ASSOCIATES, INC. 2727 SW SNYDER BLVD, ANKENY, IOWA 50023 (515) 964-2020

## UNITED STATES PUBLIC LAND SURVEY CORNER CERTIFICATE OF

Land Survey Monuments situated in Section 3, Township 77 N, Range 20 W, West of the Fifth Principal Meridian, MARION County, Iowa. Previously recorded in Book 1, Page 440 in County Recorder's Office.  
 (book, page, document number, ect.)

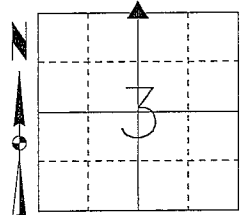
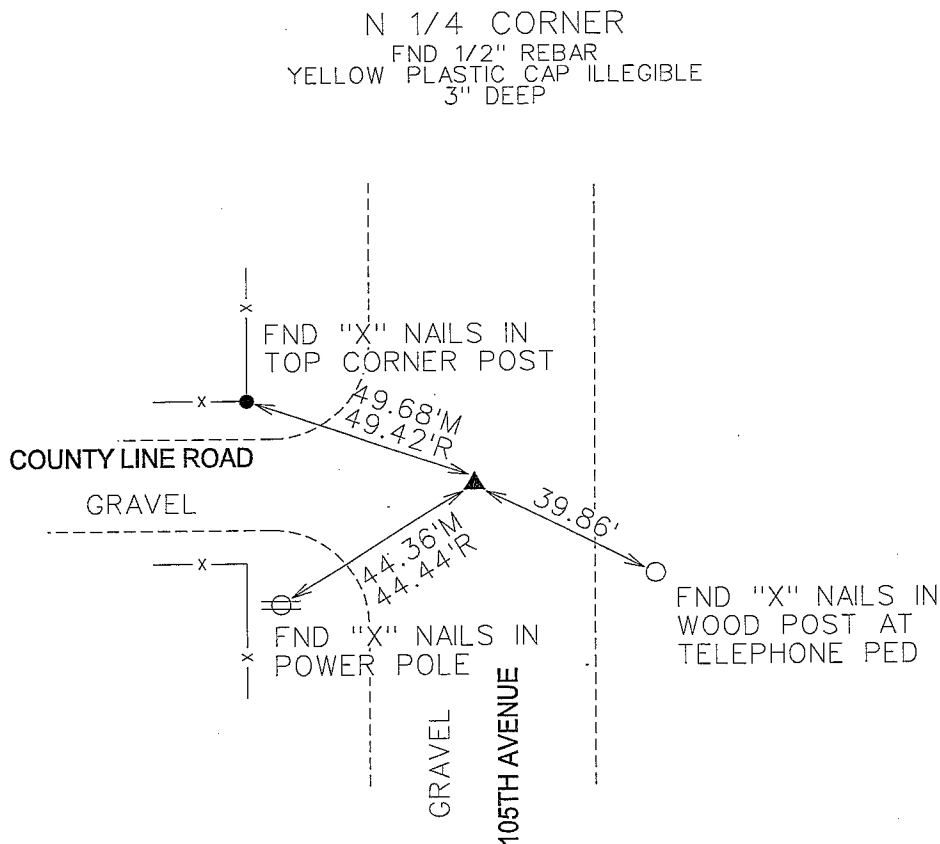
(Show reason for preparing this certificate, the evidence and detailed procedures used in establishing the corner positions and monumentation found or placed.)

### Monument Description and Remarks:

THE EXISTING CORNER CERTIFICATE RECORDED IN BOOK 1 PAGE 440 OF THE MARION COUNTY RECORDER'S OFFICE INDICATED THAT THE NORTH 1/4 CORNER IS MONUMENTED WITH A 1/2" REBAR WITH A YELLOW PLASTIC CAP # 3321. SEARCH AREA USING A METAL DETECTOR AND FOUND 1/2" REBAR WITH A YELLOW PLASTIC CAP ILLEGIBLE AND ACCEPTED FOUND MONUMENT AS THE SECTION CORNER. THIS CERTIFICATE IS BEING PREPARED BECAUSE THERE ARE NO LONGER THREE VALID TIES OF RECORD.

### Plan-View

(Show a minimum of three reference ties to durable physical objects, relevant monuments and physical conditions that will enable recovery of the corner.)



NOTE: ALL DISTANCES MEASURED HORIZONTAL UNLESS OTHERWISE NOTED.

TERRY COADY  
18643  
IOWA

I hereby certify that this land surveying document was prepared and the related survey work was performed by me or under my direct personal supervision and that I am a duly licensed Professional Land Surveyor under the laws of the State of Iowa.

*Terry Coady* 11-2-2022  
 Terry Coady, PLS Date

License Number 18643  
 My License Renewal Date is December 31, 2023

Pages or sheets covered by this seal:  
 SHEET 1 OF 1

### List Corners to be Indexed

Corners	Section	Twp	Range
N 1/4	3	77	20
S 1/4	34	78	20

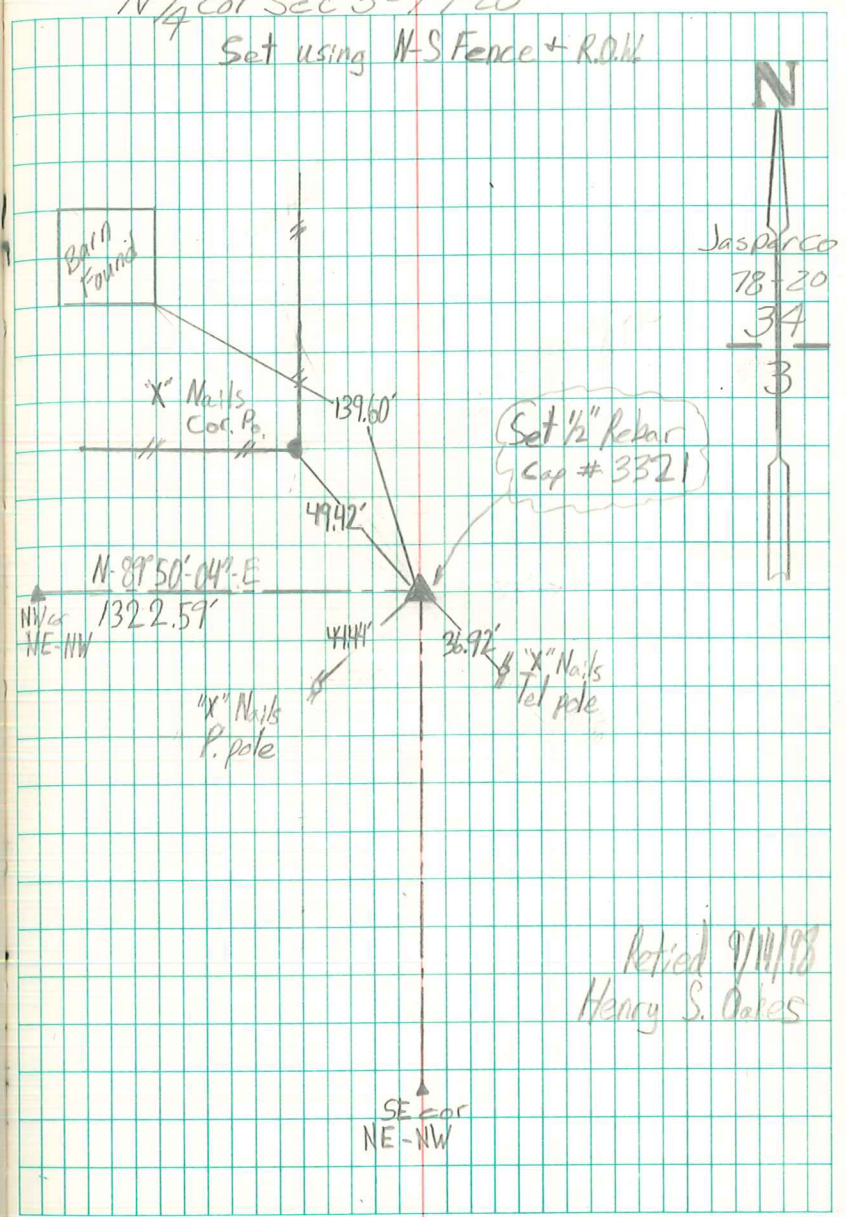
TECH: JDP

PN: 122.1345

DATE: 10-17-22

N 1/4 cor Sec 3-77-20

Set using N-S Fence + R.O.W



Jasper Co  
78-20  
34  
3

Set 1/2" Rebar  
Cap # 3321

N 89° 50' 04" E  
1322.59'

X" Nails  
P. pole

X" Nails  
tel pole

SE cor  
NE-NW

Retired 9/11/98  
Henry S. Oakes