

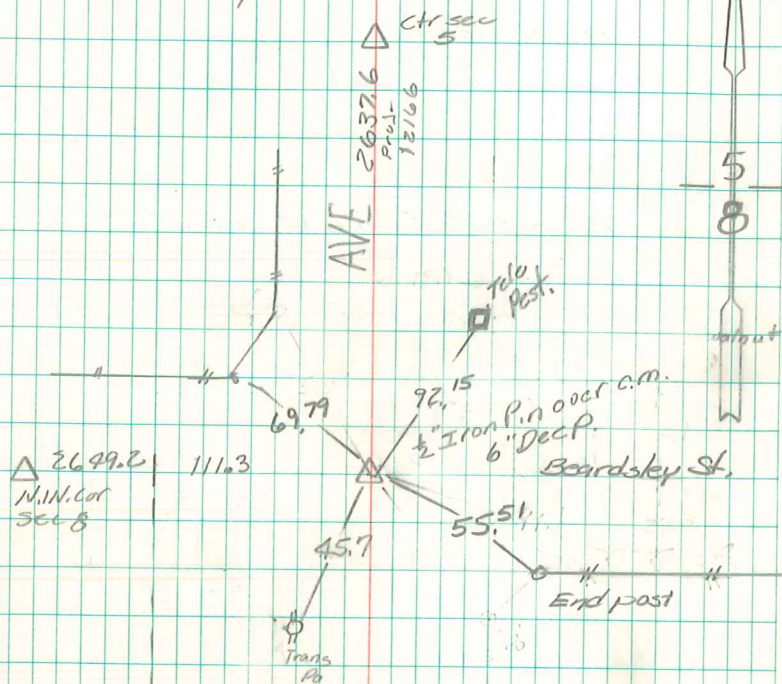
Found Brick broken, Granit Rock,
Crookery & 2-2" tile

Lowered 1-2" Tile in Place & set
Cm. over top of tile.

N. 1/4 Cor sec 8-77-20

set - 8-30-40

Notes: Wignall-Harper, Frazier
Elsberry & Mandell



marion
Co.
shop
DUNREATH

Found & Retied
Nov - 27 - 1979
Molt & Pregok

5/30/06
Craig Johnston